



Volume 9 Issue 4  
Fall 2019

## Friends of L&N Depot Newsletter

### Save the Depot Santa Style!

Our SAVE THE DEPOT campaign continues right into the holiday season. We have revealed 10 posters with the help of many friends in the community. With just 2 poster unveilings remaining, we are working hard to keep the excitement through the busy Christmas season.



Now is the time to find gifts that are unique and we have more than a few. Complete sets of our commemorative posters are available and there is opportunity to get matching numbers when you shop early. Posters are \$24.95 or \$250.00 for a complete set. This is a gift that will not be duplicated.

Just in are the complete poster series ceramic mugs. All 12 commemorative posters are featured

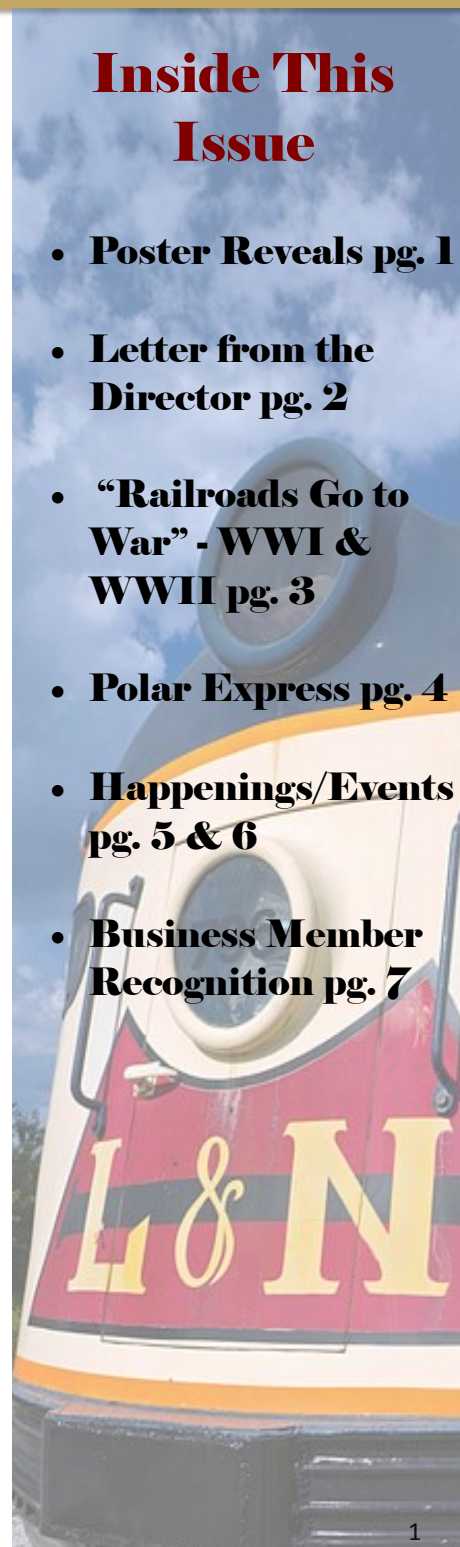
on 4 separate mugs. Visit our gift shop to pick up a complete set already packaged and including a full bag of authentic L&N Coffee. You will enjoy coffee like it was served in the Louisville & Nashville Railroad.

Please join us as we unveil the 11th poster of the SAVE THE DEPOT campaign. The unveiling will take place in the 2nd floor museum at the L&N Depot. The poster will be unveiled by Santa Bob! Enjoy the big guys favorite treat, hot cocoa and cookies! Plus get a jump start on Polar Express ticket registration with a RailPark Membership!

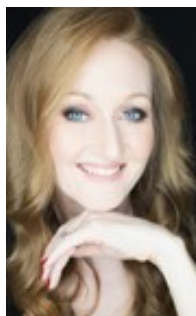


### Inside This Issue

- **Poster Reveals pg. 1**
- **Letter from the Director pg. 2**
- **“Railroads Go to War” - WWI & WWII pg. 3**
- **Polar Express pg. 4**
- **Happenings/Events pg. 5 & 6**
- **Business Member Recognition pg. 7**



## ***From the Director***



Like most everyone in Kentucky, I am grateful for the fall weather. During this beautiful time of year, the L&N Depot is host to many festive events. Our Haunted Lantern Tours are now in the 5th year of production. We added a Winter Wine Festival on November 9th. And of course the most sought after holiday experience is the ever popular Polar Express Storytime held in early December. We encourage our Rail-Park Members to take advantage of early ticket registration November 1-4. You can find more details on pg. 4 of this newsletter.

Our SAVE THE DEPOT campaign continues through the end of the year and I hope that you will support our efforts to preserve railroad history by donating to this campaign.

*Jamie Johnson*

Executive Director

## **New Team Member**

by Miliska Knauff

Josh Hutcheson joined the Historic RailPark & Train Museum at the L&N Depot as Visitor & Administrative Coordinator in August 2019. Job responsibilities will involve visitor facing services (like the gift shop, membership, and docents) and administrative tasks (such as those associated with group events, ticketing, bookkeeping, field trips, and workshops).



Born in Kentucky, Josh lived for a short time in Wisconsin. He spent the last 20 years in Bowling Green and was married in December 2018. Josh received his B.S. degree from Western Kentucky University in Recreation and Non-Profit Administration.

Josh's interests and hobbies include basketball, hiking, and activities involving family and church. He loves meeting and interacting with people and learning more about the people he meets. Josh looks forward to serving the larger Bowling Green community! Contact Josh at 270-745-7317 or [visitorservices@historicrailpark.com](mailto:visitorservices@historicrailpark.com) with any questions you on membership and volunteering.

## **Friends of the L&N Depot Board of Directors**

### **President – Barry Williams**

Owner of Broadcast and Communications Systems, LLC

### **Vice President – John Forsee**

Retired, Dairy Industry

### **Treasurer – Leo Eggleton**

Tax Advisor, H&R Block

### **Secretary – Richard Webber**

Retired Owner, The Bodyman's Friend

## **At Large**

### **Telia Butler**

Director of Sales, Courtyard by Marriott

### **Joe Cox**

Attorney, Cole, Loney & Cox

### **Mike Davenport**

Retired, Banking

### **Khristian Ervin**

Event Sales Manager, Holiday Inn University Plaza & Sloan Convention Center

### **Martha Henon**

Case Manager, Morgan & Morgan

### **David Hosay**

Account Manager, Sublime Media Group

### **Miliska Knauff**

Retired, Healthcare and Higher Education

### **Jim Lockwood**

Retired, Electrical Contractor

### **Pat O'Rourke**

Retired, Retail Management

### **Bobby Rabold**

Businessman

### **Rick Williams**

General Manager, Forever Communications



# "Railroads Go to War" Exhibit WWI & WWII Display Revealed

by Miliska Knauft



In September 2019, the RailPark unveiled a new WWI and WWII display (found on the second floor of the museum). This display is phase I of a larger exhibit, "Railroads Go to War". Featured on one side of the display is information on the Great War (WWI), USRA equipment standardization, troop and passenger movement during the war, and rationing on the railroads. Walk around to the other side of the display. Here you will learn about troop transport cars during WWII, read quotes from soldiers' letters, and peruse through information on the Louisville and Nashville Railroad's 728<sup>th</sup> Railway Operating Battalion of the United States Army Transportation Corps. Unveiling of phases II and III of "Railroads Go to War" will take place in 2020 and 2021 respectively. Phase II will feature

women in railroading and Rosie the Riveter. Phase III will feature canteens and Harvey Girls. Models of all three phases of the "Railroads Go to War" exhibit can be found in the tall, oak glass exhibit case on the second floor of the museum (near The Great Locomotive Chase).

Research for the "Railroads Go to War" exhibit was completed by Mike Dowell, John Forsee, and Miliska Knauft. Exhibit design and layout was courtesy of the Fall 2018 Advanced Graphic Design Students under the direction of Assistant Professor of Graphic Design, Natalie Tyree, in coordination with Friends of L&N Depot. Student Designers for the WWI display were Aislynn Barnes, Hannah Duckett, and Emily Geiman. Student Designers for the WWII display were Jordan Bodenhamer, Craig Ostertag, and Madeline Rafferty. The RailPark's Museum Committee consisted of Joe Cox, Jaime Johnson, and Miliska Knauft. Work on the fixed exhibit stand and installation was completed by Terry and Miliska Knauft, Jim Lockwood, Gary Monk, and Pat O'Rourke.



## CAMPAIGN FOR HISTORIC RAILPARK & TRAIN MUSEUM EXHIBIT

# RAILROADS GO TO WAR

YES, I WOULD LIKE TO HELP FUND THE NEW MUSEUM EXHIBIT!

I would like to make my donation by: ☐ Cash/Check ☐ Credit Card Total Donation Amount \$\_\_\_\_\_

This donation is: ☐ In Memory ☐ In Honor of \_\_\_\_\_

My Company will match this gift. Please contact me concerning how to obtain their matching gift.

Name \_\_\_\_\_ Company (if applicable) \_\_\_\_\_

Address \_\_\_\_\_ City, State, Zip \_\_\_\_\_

Phone \_\_\_\_\_ Email \_\_\_\_\_

Historic RailPark & Train Museum \* 401 Kentucky Street \* Bowling Green, KY 42101 \* [historicroilpark.com](http://historicroilpark.com) \* 270-745-7317

# Polar Express

## RAILPARK MEMBER REGISTRATION

# 2019

### RailPark Member Benefits

**Train Master \$35** (3 Polar Express Tickets)  
*1 person (Single adult)*  
 • Admission to railcars and museum for 1 year for 1 person  
 • Free quarterly newsletter • 10% gift shop discount

**Yard Master \$65** (6 Polar Express Tickets)  
*2 to 4 people (Family/Grandparent)*  
 • Admission to railcars and museum for 1 year for 4 people  
 • Early invitation to Special Events  
 • Free quarterly newsletter • 20% gift shop discount

**Engineer \$100** (8 Polar Express Tickets)  
*5 to 8 people (Family/Grandparent Plus)*  
 • Admission to railcars and museum for 1 year for 8 people  
 • Early invitation to Special Events  
 • Free quarterly newsletter • 20% gift shop discount  
 • 10% facility or railcar rental discount

**Conductor \$150** (10 Polar Express Tickets)  
*5 to 8 people (NARM) Association membership included*  
 • Admission to railcars and museum for 1 year for 8 people  
 • Early invitation to Special Events  
 • Free quarterly newsletter • 20% gift shop discount  
 • 10% facility or railcar rental discount  
 • Admission to over 680 NARM museums and attractions all over America for one year



RailPark Members are  
 GUARANTEED Polar Express tickets  
 and can begin registering on  
**Friday, November 1st - 4th 10am  
 - 4pm** by calling

270-745-7317 or visit us at:

401 Kentucky Street in Downtown  
 Bowling Green KY!

\*General public may register Tuesday Nov. 5  
 9am-12pm in person only.

### Polar Express Story Times:

December 2, 3, 4, 5

December 9, 10, 11, 12

4:30, 5:00, 5:30, 6:15, 6:45, 7:15



*The most coveted ticket  
 this holiday season!*





# Annual



# Membership

*Thank you for being a  
Friend of the L&N Depot!*

## **\$35 Train Master**

- Admission to railcars and museum for one person, for one year
- Free quarterly newsletter
- 10% gift shop discount

## **\$65 Yard Master**

- Admission to railcars and museum for four people, for one year
- Free quarterly newsletter
- Early invitation to special events, including Polar Express
- 20% gift shop discount

## **\$100 Engineer**

- Admission to railcars and museum for eight people, for one year
- Free quarterly newsletter
- Early invitation to special events, including Polar Express
- 20% gift shop discount

## **\$150 Conductor**

- Admission to railcars and museum for eight people, for one year
- Free quarterly newsletter
- Early invitation to special events, including Polar Express
- 20% gift shop discount
- 10% rental space discount
- Admission to over 680 NARM museums (North American Reciprocal Museum Association) for one year

## **Member Information**

Name: \_\_\_\_\_

Address: \_\_\_\_\_

Email: \_\_\_\_\_

Phone: \_\_\_\_\_

☐ *New Membership*    ☐ *Membership Renewal*

Please make check out to **Historic Railpark** and mail to:  
**401 Kentucky St. Suite B. Bowling Green, KY 42101**  
You can also purchase a membership on our website!

## **Pictures From Our Most Recent Events**

Thank you to the many attendees at our most recent fundraising event, the Haunted Lantern Tours and we hope many of you visited our friends at Lost



River Cave to see the Scarecrow Trail..





# Winter Winer Festival



Inside the L&N Depot  
**November 9, 2019**  
**11:00 AM—6:00 PM**

**Food Onsite:**  
**Lost River Pizza Truck**  
**SoKY Marketplace—**  
offering cheese & cracker platters

## Participating Wineries:

Purple Toad Winery—Paducah KY  
Forest Edge Winery—Shepherdsville KY  
StoneBrook Winery—Melbourne KY  
Carriage House Vineyards—Auburn KY  
Traveler's Cellar—Rockfield KY  
Bluegrass Winery—Smiths Grove KY  
1922 House Vineyards & Winery—Nicholasville KY

## Perfect Pairings \$10—

Taste your  
way through  
select KY



wines paired with the perfect  
food by our friends at SoKY  
Marketplace.

## Painting Party \$35—



Sip and paint  
alongside artist  
Nick Mantlo-  
Coots and take  
home a festive  
holiday painting.

**ONLINE TICKETS AVAILABLE AT: [Historicrailpark.com](http://Historicrailpark.com)**

**\$20 in advance \$25 at the door**

**Tickets include 10 sampling tickets and souvenir sampling glass.**



**Additional tastings tickets along with wine by the  
glass and by the bottle available for purchase.**

**Historic RailPark, 401 Kentucky Street, Bowling Green, KY – 270-745-7317**



**Friends of the  
L&N Depot  
Newsletter**

401 Kentucky Street, Suite B  
Bowling Green, KY 42101

**For the latest information on events and happenings at the RailPark, follow us on social media. The RailPark proudly boasts a 17,500 person social media audience.**



**Facebook:**

Historic RailPark and Train Museum -Bowling Green  
L&N Depot  
Unseen Bowling Green

**Instagram:**

@historic\_railpark\_  
@unseenbg

**Twitter:**

@LNdepot

**Thank you to our 2019 business members!**

**Platinum  
Spike**

**Dixie Restoration  
and Building Maintenance LLC**

631 Columbia Hwy • Greensburg, Kentucky

**Silver  
Spike**



**Bronze  
Spike**



Business memberships are available and they come with great benefits! Please call Jamie Johnson at **270-745-7317** or email [director@historicroailpark.com](mailto:director@historicroailpark.com) for more info.