



Volume 10 Issue 2
Spring 2020

Friends of L&N Depot Newsletter

RailPark's Murals

As you first step into the main waiting room at the Historic Rail-Park & Train Museum's L&N Depot, you will notice six large murals on either side of the room. These murals provide visitors with a glimpse into the 'Golden Age of American Railroading' in Bowling Green, Kentucky.

On one side are murals of the Hilltoppers and an L&N Railroad cook, a WWII story, and an L&N Depot scene. On the other side of the room are murals of a soldier riding coach during WWII, Gandy Dancers, and a scene at the Bowling Green Station. Plaques have been added near each mural to provide visitors with information on the scenes. You will also be able to read information about the artist. C. David Young, the Green Room/Meeting Room, and the old newspaper stand.

Once the RailPark is open again to visitors, come visit us and 'check-out' the waiting room murals and information. It is quite interesting!!!

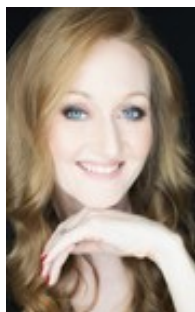


Inside This Issue

- **RailPark's Murals**
pg. 1
- **From the Executive Director** pg. 3
- **2020 Club Campaign** pg. 4
- **Spotlight Articles**
pgs. 4, 5&6
- **Annual Membership**
pg. 7
- **Business Member Recognition** pg. 8



From the Director



Our world is certainly very different these days. The Covid-19 pandemic has forever changed our daily lives and has reshaped our future in ways we have yet to know.

What I do know is that we must adapt to our new normal. I choose to focus on the positive and look at this time as an opportunity to reset. Many things have slowed down here at the train museum. Many of our events have been canceled or postponed. But this is not the end for us. We are refocusing and marching on.

We closed our doors to the public on March 18th and have spent this time working behind the scenes. Operating in a historic building and maintaining a fleet of train cars means there is always work to be done. Staff and volunteers have been working along side each other, 6ft apart of course, to complete many projects. It feels good to finally get around to some of the items at the bottom of our to do list. You will see just a few of those projects here in the newsletter.

Social media has been a part of our organization for some time now. However, during this time we have utilized it to stay connected with our history and train loving fans. You can now find a great series of videos with our very own Conductor Cory. There is also an article in this newsletter about the series. We hope you take time to watch the videos.

We were so excited to announce our 2020 Club campaign and had great expectations for this year of celebration. Our hopes are still high that our friends and supporters will step up and participate in the campaign. Please consider joining by visiting our website or by completing the form included in this newsletter. Your \$20 gift will help us reach our goal this year.

Our hope is to open our doors soon. We are anxious to see our friends and volunteers.

Stay Safe!

*Jamie Johnson,
Executive Director*



Friends of the L&N Depot Board of Directors

President – Barry Williams

Owner of Broadcast and
Communications Systems, LLC

Vice President – John Forsee

Retired, Dairy Industry

Treasurer – Leo Eggleton

Tax Advisor, H&R Block

Secretary - Miliska Knauff

Retired, Healthcare and Higher Education

At Large

Joe Cox

Attorney, Cole, Loney & Cox

Mike Davenport

Retired, Banking

David Hosay

Project Manager, Sublime Media Group

Jim Lockwood

Retired, Electrical Contractor

Pat O'Rourke

Retired, Retail Management

Bobby Rabold

Businessman

Richard Webber

Retired Owner, The Bodyman's Friend

Rick Williams

General Manager, Forever Communications



CAMPAIGN FOR THE HISTORIC RAILPARK & TRAIN MUSEUM



2020 CLUB CAMPAIGN

YES, I WILL JOIN THE 2020 CLUB AND SUPPORT THE DEPOT!

OUR GOAL: We are asking 2020 of our friends to donate \$20 this year.
Club members will receive a personalized keepsake ornament just in time for Christmas 2020.

I would like to add ☐1 ☐2 ☐3 ☐4 ☐5 **CLUB MEMBERS** for @\$20 each for a total of \$_____

On the back of this card please write the name as you would like it to appear on your ornament for each club member.

I would like to make my donation by: ☐Cash/Check ☐Credit Card-Include Card #, exp. date and CVV Code on back of this card

Name_____ Company (if applicable)_____

Address_____ City, State, Zip_____

Phone_____ Email_____

Historic RailPark & Train Museum * 401 Kentucky Street * Bowling Green, KY 42101 * historicrailpark.com * 270-745-7317



2020 CLUB MEMBER INFO

Each **CLUB MEMBER** will receive a personalized keepsake ornament. Please print the name(s) as you would like it to appear on the ornament. The maximum number of characters is 20 including spaces.
Get one for everyone in the family, in memory, as a gift or with your company name!

| | |
|----------------------------|-------|
| <input type="checkbox"/> 1 | _____ |
| <input type="checkbox"/> 2 | _____ |
| <input type="checkbox"/> 3 | _____ |
| <input type="checkbox"/> 4 | _____ |
| <input type="checkbox"/> 5 | _____ |

An Exclusive Interview with Conductor Cory

By Cory Burdette

Like many of you, we were not expecting the Covid-19 pandemic. We have had to close down the museum to the public, adjust our regular operations and procedures, and even had to limit our staffing in some cases. However, here at the Depot we managed to make light of the situation. This is time we could now spend on projects we never had the chance to do; one such project was the "Beyond the Rails" video series. Even though he is a very busy man, I have had the chance to conduct a somewhat brief but informative interview with the main star of the show, Conductor Cory himself.

According to Conductor Cory, the "Beyond the Rails" series is a fantastic way to enjoy what we do here at the Historic Railpark & Train Museum: telling stories from the safety of your own home. "This free, online series is both fun and educational; it is a great tool to both learn something, but also keep it entertaining and exciting as well," states Conductor Cory. The series is now working on its third season/installment, but there is already a plethora of information for all train fans young and old to enjoy thus far in the other videos that have been made. "The subjects range from exploring our finely-preserved railcars, to uncovering stories told in our Smithsonian-style two-story museum and beyond! These videos touch on areas such as the Pullman Porters, how a locomotive works, how various wars have affected the Louisville and Nashville Railroad, and much more; but of course, I don't want to give it ALL away," chuckled Conductor Cory.

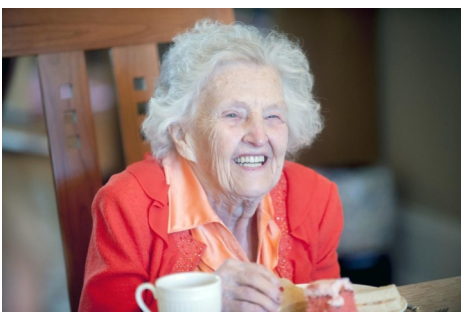
If you find yourself wondering what to binge next while being stuck at home, feel free to head over to the Historic Railpark & Train Museum's website or Facebook page, where all the videos have been released in a weekly fashion. "We are also on YouTube in case you either missed an episode or you want to watch them all over again. Also, feel free to like, subscribe and share with your friends and family!" Even though our Depot has become quieter recently, it is wonderful that the stories that this historic landmark has to tell are still being told. Conductor Cory had to rush off to catch his train, but before he had to go, he wanted to say: "We look forward to seeing you all again soon. Until then, stay safe, be well, and thank you for your continued support for the Historic Railpark & Train Museum!"



In Memoriam: Cora Jane Spiller

By Dick Webber

Our organization met Cora Jane Spiller by way of her husband, Colonel Bob Spiller, who joined the Historic Rail Committee in June 2002. Dorian Walker and I believe he came as result of the urging of Ken Hines. Spiller took charge of recruiting, training and organizing docents and other volunteers. During 2002-2004 Historic Rail Committee conducted a series of tours of the newly acquired train consist and the in-process Depot restoration in order to introduce our new attraction to the community. Volunteers, particularly docents, were vital to that effort. In 2004 Colonel Spiller stepped aside as volunteer chairman, but Bob and Cora Jane Spiller continued to follow and attend Depot functions. In 2010 we acquired the hospital car and recruited the Spillers again to help tell the story of the Military connection of the car. Bob and Cora Jane generously supported the effort.



Thanks to Cora Jane and Bob Spiller for their hard work and generous support of Historic Railpark! We miss you!

Photo by Bac Totrong for the Bowling Green Daily Newspaper.

In Memoriam: Edward “Curly” Grimes



Anyone that got to hear one of Ed's stories, was a lucky person. Mr. Grimes was no stranger to our organization and was always ready to share a memory from his days of riding the rails and working on the Railway Post Office car. He and his wife Roberta shared a love for our own RPO car and would both light up when visiting with us. "I'll never forget showing him our RPO for the first time. I don't think he ever thought he'd step back into his 'office' again. He was like a kid in a candy shop!" said Dorian Walker.

Thank you Ed Grimes for your love and passion for our museum. We miss you greatly!

Ed is pictured here operating the catcher arm.

This Month in Railroad History

In May 1853, the first track of the L&N Railroad was laid in Louisville, Kentucky, near the site of the L&N building, Headquarters of the Louisville and Nashville Railroad Company, and Louisville's Union Station. The 11-story L&N building with its iconic neon sign at Ninth Street and Broadway still creates a striking image in the distance.



Behind the Scenes at the Railpark

By Miliska Knauft

During the closure of the Historic RailPark & Train Museum due to COVID-19, we have had the opportunity to work on several preservation projects. The next time you come to visit the RailPark, be certain to 'check-out' the new additions.

One addition can be found outside the #1107 Railroad Post Office (RPO) car built in 1921. RPOs operated in high-speed passenger trains and sorted mail enroute, to speed delivery. The RPO was staffed by highly trained Railway Mail Service postal clerks.

Right outside the RPO is a newly poured concrete pad with a post used to hold mail bags for pick-up. Mail was delivered "on-the-fly". This means mail was thrown off at small towns and the incoming mail was captured by a special hook and brought onto the moving car to be sorted.



Another addition is the installation of new steps on the stairs leading up into the RPO car for our visitors. Here you see Volunteer and Board Member Pat O'Rourke working on the steps to the RPO car. A special thanks to Pat and Jim Lockwood for their time and talents!



A third addition is the completion of the reupholstering of the third-class seats in the #3467 Towering Pine L&N Pullman Sleeper Car built in 1953. Reupholstering of the seats in second and third-class have been needed because of the many tens of thou-

sands of visitors who have sat on the seats over time. Although the restoration of the seats in third-class is complete, donations are still needed for the reupholstering of second-class seats and for the carpet in the rail car. Contact Jamie Johnson, Executive Director, if you would like to donate towards this especially important cause.



Annual Membership

*Thank you for being a
Friend of the L&N Depot!*

\$35 Train Master

- Admission to railcars and museum for one person, for one year
- Free quarterly newsletter
- 10% gift shop discount

\$65 Yard Master

- Admission to railcars and museum for four people, for one year
- Free quarterly newsletter
- Early invitation to special events, including Polar Express
- 20% gift shop discount

\$100 Engineer

- Admission to railcars and museum for eight people, for one year
- Free quarterly newsletter
- Early invitation to special events, including Polar Express
- 20% gift shop discount

\$150 Conductor

- Admission to railcars and museum for eight people, for one year
- Free quarterly newsletter
- Early invitation to special events, including Polar Express
- 20% gift shop discount
- 10% rental space discount
- Admission to over 680 NARM museums (North American Reciprocal Museum Association) for one year

Member Information

Name: _____

Address: _____

Email: _____

Phone: _____

☐ *New Membership* ☐ *Membership Renewal*

Please make check out to **Historic Railpark** and mail to:
401 Kentucky St. Suite B. Bowling Green, KY 42101
You can also purchase a membership on our website!



Welcome **Dustin Ferguson**

The Historic RailPark & Train Museum has a new member to the Visitors Services Department ... Dustin Ferguson!

Dustin began working with us in May 2020. Just before joining the RailPark, he was employed with ALN Apartment Data, Inc. as well as the Graves County Public Library in Mayfield, KY. He relocated to Bowling Green the first weekend of April. Dustin's internship and first experience working in a museum setting was with the Conrad-Caldwell House Museum in Louisville, Kentucky, an 1895 house and a 2019 Kentucky History Award winner.

In his new position, Dustin will be assisting the Executive Director with various administrative tasks, giving tours, managing the gift shop, coordinating the schedules of gift shop personnel and documents.

Dustin grew up in Kentucky and graduated from Murray State University with a B.F.A. in History in 2013. Working at the RailPark, Dustin hopes to gain more experience in museum settings and to share his love of history, especially that of railroad history and culture, with visitors.

Dustin's interests and hobbies include reading historical fiction and women in history, playing video games, and music. Dustin looks forward to "getting to know" co-workers and visitors to the RailPark!

Contact Dustin at 270-745-7317 or visitorservices@historicroailpark.com with any questions you have on membership and volunteering.

Join us in welcoming Dustin to the RailPark!



**Friends of
L&N Depot
Newsletter**

401 Kentucky Street, Suite B
Bowling Green, KY 42101

For the latest information on events and happenings at the RailPark, follow us on social media. The RailPark proudly boasts a 17,500 person social media audience.



Facebook:

Historic RailPark and Train Museum -Bowling Green
L&N Depot
Unseen Bowling Green

Instagram:

@historic_railpark_
@unseenbg

Twitter:

@LNdepot

Thank you to our business members!

**Gold
Spike**



**Silver
Spike**



**Bronze
Spike**



Business memberships are available and they come with great benefits! Please call Jamie Johnson at **270-745-7317** or email director@historicroailpark.com for more info.