



The Newsletter of Friends of L&N Depot

From the Director...



Now in my fourth year as Executive Director for the Historic RailPark & Train Museum, I am more infatuated with the old train station than ever. This beautiful building is a place to cherish and enjoy. Everyday travelers visit our restored depot and browse through our museum.

As you will read in this newsletter, Museum Committee Chair, Miliska Knauff, was able to create a new temporary exhibit that will be in place until late 2019. The committee is already working on a new permanent exhibit, Railroads Go To War, expected to be released in late 2019.

An exciting time of year is just around the corner! We can already hear the bells ringing. Polar Express is back for the 16th year, and we are expecting our largest attendance. Now is the time to make sure your membership is current. This is a great way to support the museum and guarantee your Polar Express tickets!

Lights, Camera, Action!

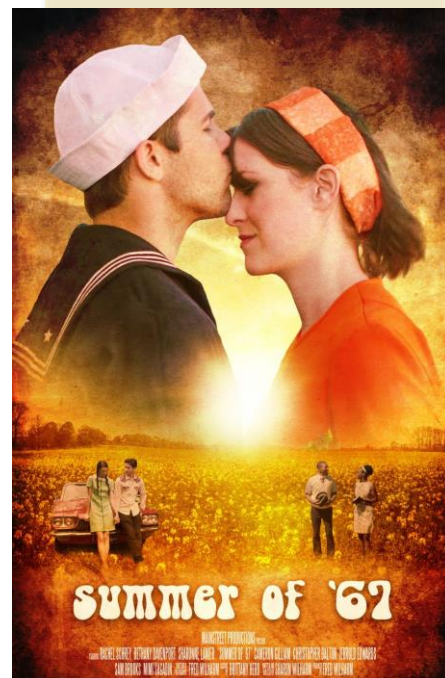
The Historic RailPark & Train Museum hosted a Red Carpet Movie Showing of the independent film, Summer of '67. Several scenes from the movie were filmed on site at the L&N Depot and feature train cars currently on display. The movie was shown in celebration of the 11th anniversary of the museum opening.

Based on real-life events, Summer of '67 brings to life the turbulent times of the sixties and the struggles faced by the men and women impacted by the Vietnam War. Young wife and mother, Milly, is forced to live with her mother-in-law while her husband, Gerald, is away on the USS Forrestal. Kate must choose between Peter, her high school sweetheart, and Van, her new hippie boyfriend. Ruby Mae finally finds true love with Reggie, only to have him whisked away by the draft. Each woman faces the question of whether their man will return.

This movie is available for digital download at Amazon.com.

INSIDE THIS ISSUE

- Summer of '67 pg.1
- New Hires pg. 2
- Unseen BG pg.2
- Towering Pine Restoration pg. 3
- Polar Express pg.4
- New Exhibit pg. 5
- Haunted Lantern Tours pg. 6

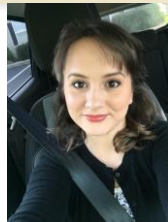


ALL ABOARD!!

The Historic RailPark and Train Museum is proud to announce three new staff members that have hopped aboard!



Brad Spinks retired from Bowling Green City School's Maintenance Department in 2011. Brad joined the RailPark full time in February 2018.



Kelsey Lowe Bailey comes to us from Southern Indiana with a background in hospitality and a passion for historic preservation. We welcomed her to our staff in August 2017 as our Visitor Services Coordinator. Kelsey began assisting with bookkeeping in February 2018.



Skylar Wooden graduated from WKU in 2014 with a bachelor's in English and French. She was employed as a technical writer before going to teach English in France in 2017. She is on the Board of Directors for the Bowling Green International Festival, where she became interested in nonprofit work. We welcomed Skylar in June 2018 as the Events and Facility Rental Coordinator.

RailPark Recipient of Nonprofit Award

The Historic RailPark and Train Museum was awarded the 2018 Altruistic Nonprofit Award from the WKU Student Nonprofit Organization. Thank you to our Board Member, Miliksa Knauft, for nominating us.



Picture of Director Jamie Johnson and Board Member Miliksa Knauft receiving award at WKU 11th Annual Nonprofit Award Luncheon, April 29, 2018



The Historic RailPark & Train Museum is now host to UnSeen BG, Haunted History Walking Tours. The tours are conducted in the historic district in downtown Bowling Green. The tours trace the history of hauntings you never knew existed and disclose histories, mysteries, scandals and haunts from our town's history. All stories were researched and developed by Kara Williams Glenn. Tours begin at the downtown Starbucks Stadium Park Plaza and walks in intervals for 1.3 miles total. All our tour guides are characters and have a passion for both history and theatrics. The tour is family friendly.

"We are excited to continue and promote this great addition to the tourism offerings in Bowling Green," said Jamie Johnson, Executive Director for the RailPark. "The walking tours afford us the opportunity to expand our mission to promote historic preservation through storytelling. The opportunity for guests of Bowling Green to see our downtown at a such a personal level is an extension of historical offerings." UnSeen BG tours fall season will run through November 3. Evening tours are available Thursday, Friday and Saturday evenings. Tour tickets can be purchased online or by calling the Historic RailPark & Train Museum. Adult Ticket: \$18, Child Ticket (ages 10 & under) \$8.

Towering Pine Restoration Project

In June of 2018, Friends of the L&N Depot began a fundraising campaign to provide a much-needed interior restoration of the Towering Pine L&N Pullman Sleeper Car. During railcar tours, visitors are invited to sit down in the original seats and hear the story of how passengers traveled in the luxury railcar.

Dorian Walker, a member of the original Depot Development Authority, made a once-in-a-lifetime journey aboard this railcar in 2001. He was the sole passenger when the Towering Pine arrived in Bowling Green, Kentucky, the first in our area since passenger service ended in 1979. The car was considered the pride of the L&N sleeper service throughout the fifties. The car was a special order of 26 "Pines" placed by the L&N in 1953, the Pullman company's last attempt to compete with the burgeoning highway system and the new aviation industry. It was the only 'totally intact' Pine that our research indicated still exists in America today. Sold by the L & N Company in the early 70s, the car went with other Pine series cars to be used for display at a wild bird museum in Iowa. Escaping the fate of her sister cars, the Towering Pine was locked up and slowly aged throughout the years. Though the outside is no longer near its original pristine state, Walker had only to look inside the car to recognize its value. "I entered the "Towering Pine" and walked back into the heyday of passenger service in this country." Sealed shut, the inside of the car had been left undisturbed. Every light fixture, all the original mattresses, all mirrors, even the "magic stairway" ladders to the open section upper berths were intact.

Dick Webber was a member of the Historic Rail Heritage Committee that reported to the Depot Development Authority, was charged with leading the exterior restoration of the railcar. Volunteers worked to sand, weld, and paint the "Towering Pine." Over the years, the railcar has been faced with many exterior challenges caused by extreme variance in weather conditions. With over 15,000 visitors each year taking the tour, the car faces continued interior wear.

The interior restoration includes new upholstery, lighting upgrades, paint and new carpet. There are six roomettes in the second-class seating area. We are seeking \$1,000 sponsorships for each of the rooms. The third-class seating includes 6-section sleepers with 12 seats that fold down into beds. We are seeking 12 donors at \$1,500 each to fund this portion of the restoration. The custom carpet will cost \$15,000 and we are seeking three donors of \$5,000 each. Our campaign goal is \$39,000 and our priority is to

complete the individual roomettes. The Friends of the L&N Board Members have each made a personal donation to raise \$1,500 to complete a seat in the third-class section. Local business and community members are needed to make this restoration effort possible. Please help us to bring our "Sleeping Beauty" back to her original splendor. To donate to this project, please contact Jamie Johnson, Executive Director for the Historic RailPark & Train Museum.



**To date we have raised \$7,900
of the \$39,000 needed**

FRIENDS OF THE L&N DEPOT BOARD OF DIRECTORS

President

Berry Williams
President; Broadcast &
Communications Systems, LLC

Vice President

John Forsee
Retired; Dairy Industry

Treasurer

Leo Eggleton
Accountant & Owner;
Leo Eggleton Accounting and
Financial Services

Secretary

Richard "Dick" Webber
Retired Owner:
The Bodyman's Friend

At Large

Telia Butler

Director of Sales at Courtyard by
Marriott

Joe Cox

Attorney with Cole, Loney & Cox

Mike Davenport

Retired; Banking

Ken Hines

Retired; Insurance

Miliska Knauff

Retired; WKU Professor

Jim Lockwood

Retired; Electrical Contractor

Pat O'Rourke

Retired; Retail Management

Rick Williams

City Commissioner- City of
Bowling Green



THE POLAR EXPRESS

A Storytime at the Historic RailPark

Ticket Registration

| | |
|--|---|
| RailPark Members November 1-5 By Phone or In-Person | General Public November 6, 9am-12pm In-person ONLY |
|--|---|

Presented by:  Sponsored by:  In Partnership With:    

Russellville KY Depot Handcart Donation

Picture shows the Railway Express Agency Cart that came from the L&N Depot in Russellville Kentucky. This cart was donated by Lewis Conger of Lewisburg, KY. REA was a separate organization from the L&N railroad, but worked the same stations. Lewis's father was a station agent at the Russellville Depot and used this cart as they unloaded trains by hand. The depot closed around 1970. We are thankful to have such amazing artifact to help educate visitors about the history of passenger travel.



New Exhibit at the L&N Depot Showcases the Louisville & Nashville Historical Society

By Miliska M. Knauft, Board Member

A new exhibit at the Historic Railpark & Train Museum features the Louisville & Nashville Railroad Historical Society (L&NHS). The L&NHS collects, organizes, preserves, and shares information and materials related to the Louisville & Nashville Railroad (L&N) for the benefit of railroad enthusiasts. Their archive contains articles, documents, timetables, photos, drawings, and forms. These include equipment rosters and data, L&N published reference materials, and maps.



The exhibit features four displays: 1. South Louisville Shops, 2. L&N Routes, 3. L&N Office Building and Louisville's Union Station, and 4. Prints of paintings created by Ron Flanary (President of the L&NHS). We invite you to come-out and see the new exhibit. Get a



glimpse into what is available through the L&NHS and revisit the Railpark.

A special "thank-you" to William Sledge (Archivist for the L&NHS), Terry Knauft, and Bill Dow! Without their support and expertise the exhibit would not be possible.

Annual Membership

*Thank you for being a
Friend of the L&N Depot!*

\$25 Train Master

1 person (Single Adult)

- Admission to railcar and museum for one year.
- Free quarterly newsletter
- 10% gift shop discount

\$50 Yard Master

2 to 4 People (Family/Grandparent)

- Admission to railcar and museum for one year.
- Early invitation to special events including Polar Express
- Free quarterly newsletter
- 20% gift shop discount

\$75 Engineer

5 to 8 People (Family/Grandparent Plus)

- Admission to railcar and museum for one year.
- Early invitation to special events including Polar Express
- Free quarterly newsletter
- 20% gift shop discount
- 10% Facility or railcar rental discount

\$100 Conductor

5 to 8 People (Plus North American Reciprocal Museum Association Membership)

- Admission to railcar and museum for one year.
- Early invitation to special events including Polar Express
- Free quarterly newsletter
- 20% gift shop discount
- 10% Facility or railcar rental discount
- Admission to over 680 NARM museums and attractions all over America for one year

MEMBER INFORMATION

Name: _____

Street: _____

City: _____

State: _____ Zip: _____

Email: _____

Phone: _____

☐ New Membership ☐ Renewal Membership

Historic RailPark & Train Museum

401 Kentucky Street, Suite B

Bowling green, KY 42101

(270) 745-7317

memberships@historicroailpark.com

Historic RailPark & Train Museum with
Trent Bedding presents
Haunted Lantern Tours



October 18th-27th 6:00 pm-9:00pm

Haunted Lantern Tours are alive again for the 4th year! Evening tours are open select nights October 18th - 27th, and you will hear the tragedies of the circus! Our restored railcars will each host a circus character that will share a tale with you. These historical tales come straight from the old days of circus train travel.

Tickets: \$10, Child Ticket (ages 3-10) \$6, Children 2 and under are FREE. You can get tickets by visiting our website or by calling 270-745-7317.



2018 Cast Members

Ringmaster Charlie: Latenight
Injured Circus Performer: Nicole Bratcher
Rudy the Clown: Sean Simpson
Ringmaster 2: Cade Stephens
Rollins the Strongman: Nathan Taulbee
Tatiana the Fortune Teller: Miliska Knauft
Rinaldo the Great: Marcus Miller
Bearded Lady: Rachel Atkinson
Leo the Lion Tamer: Cory Burdette
Caroline Trapeze Mom: Reily Booker
Lucas Trapeze Dad: Carla Kirkland
Katrina Trapeze Kid: Ava Walker
Johnny Trapeze Kid: Charlie Atkinson
Trapeze Family Member: Shannon Perkins

Understudies and Extras

Meaghan Boone, Savannah Bradley, James Buchner, John Buchner, Moriah Buchner, Sarah Buchner, Simon Buchner, Cadence Carr, Reed Carr, Savannah Carr, Mike Carr, Meredith Evans, Ashland Page, Tim Ritter



The Newsletter of
Friends of
L&N Depot

401 Kentucky Street, Suite B
Bowling Green, KY 42101

Phone: (270) 745-7317
Fax: (270) 745-7317
info@historicroailpark.com
www.histroicrailpark.com

Thank you to the following Business Members

Platinum Business Member

DIXIE RESTORATION
and **BUILDING MAINTENANCE LLC**
631 Columbia Hwy. • Greensburg, Kentucky 42743

Bronze Business Members



Business
Memberships are
available and
come with many
benefits. To learn
more about
becoming a
member, contact
Jamie Johnson at
270-745-7317 or
by email at
Director@historicroailpark.com